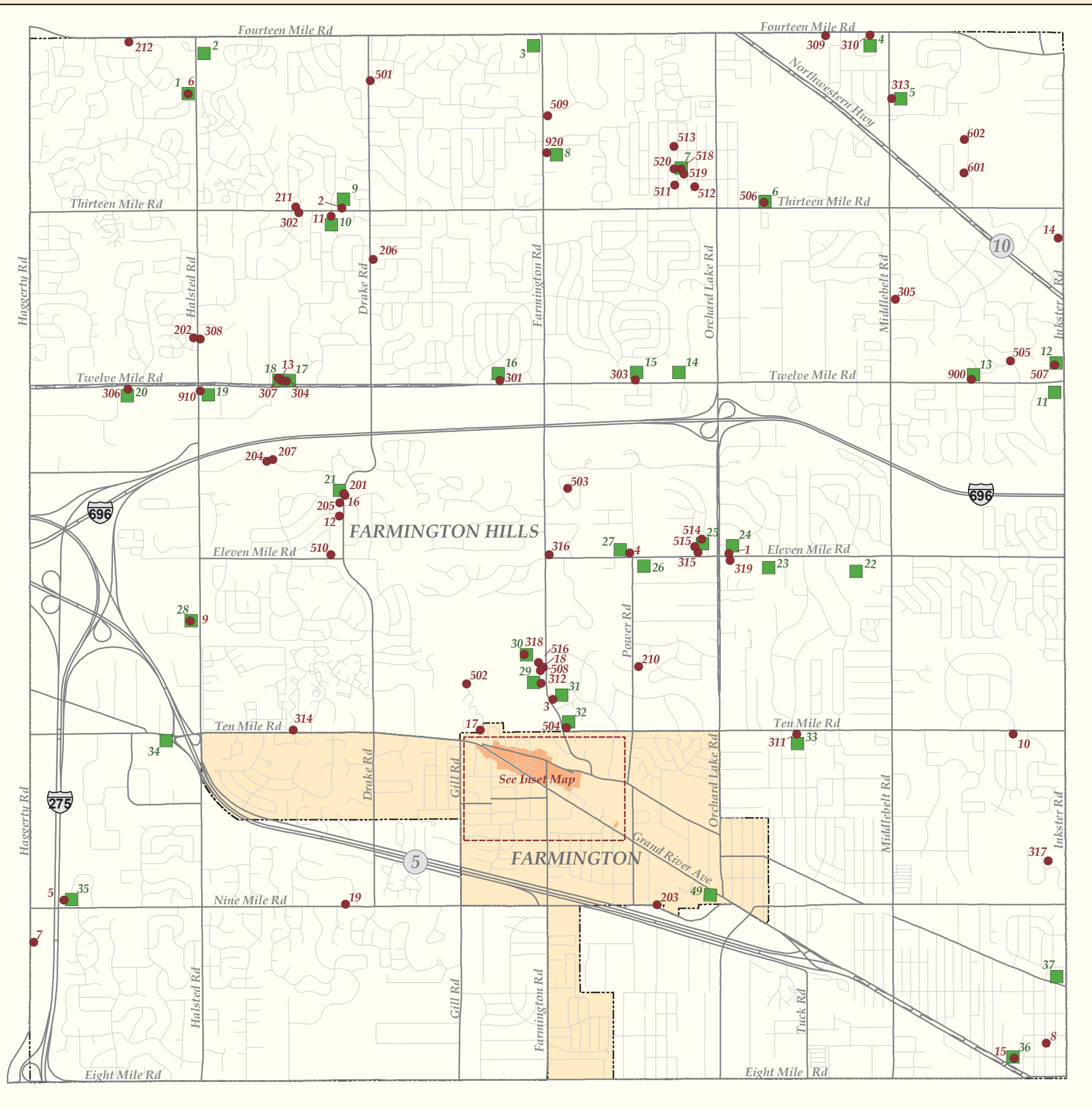


Historic Farmington & Farmington Hills Settled 1825



Farmington Hills Historic Districts

Greek Revival Buildings

- Royal Aldrich House
- John Garfield House
- Lemuel Botsford House
- Philbrick Tavern
- Stephen Yerkes - Rogers House
- Theron Murray House
- David Simmons House
- Clarenceville Blacksmith House
- Universalist Unitarian Church
- Silas Green House
- Eber Durham House
- Stephen Jennings House
- John Dallas Harger House
- Cornelius Davis Home
- Botsford Inn
- Mark Arnold House
- Palmer Sherman House
- Alonso Sprague House

Farmhouses - 1860 to 1900

- Lawrence Simmons House
- Myron Crawford House
- Samuel Davis House
- John Pettibone House
- Ely Stodgel House
- Michael Marlett - Charles Wixom House
- Hamilton Jones House
- The Halsted Apple Barn
- The Cooney House
- Ward Eagle House
- John Glick Home & Pottery
- Sherman - Goodenough House
- The Fractional School
- William Gates House
- Samuel Locke House
- The Ledyard-Cowley House
- The Franklin Comstock House
- The Barn at Heritage Park
- Bade Hired Man's House

Other Buildings - Post 1900

- Springbrook Farmhouse
- Marcus Burroves House
- The Edward Moseman House
- Kirby White House
- Richard Cudmore House
- Glen Oaks Country Club
- Sarah Fisher House
- Spicer House
- The Howard House
- Frank Steele House
- Edward Beals House
- Oaklands Sub Model House
- Henry Bach House
- James Cain House
- Pasadena Park Bungalow
- Spicer House Stables
- Edward Chene House
- Gould House
- Archibald Jones House
- Jack Beckwith House
- Arthur Beckwith House

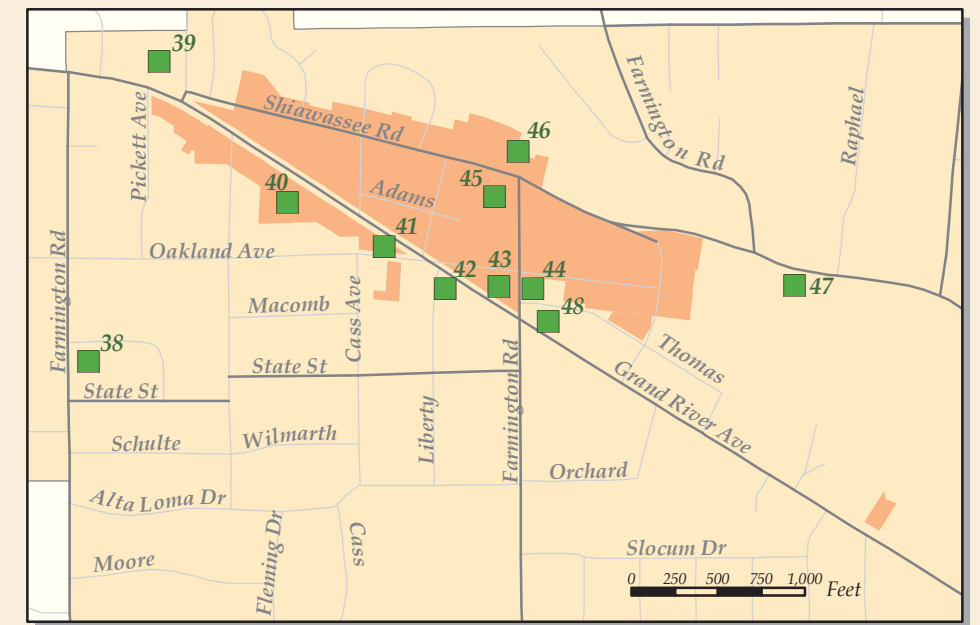
Historic Sites

- East Farmington Cemetery
- West Farmington Cemetery
- North Farmington Cemetery

Pre-Civil War Buildings

- The Miller's House
- Boorn - Halsted House
- The Parsonage
- Eri Prince House
- Elliot Sprague House
- The Drake House
- Nehemiah Hoyt House
- Dennis Conroy House
- John Cox House
- Addis Emmett Green House

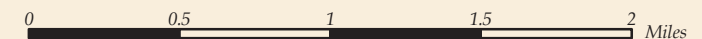
Farmington Historic District



Inset Map of Downtown Farmington

Historic Marker Sites

- Theron Murray House
- Minnow Pond
- North Farmington
- Ward Eagle Home
- Fractional District School
- Glen Oaks
- The Chene House
- North Farmington Cemetery
- John Garfield House
- Eber Durham House
- Buckhorn Corners
- St. Vincent & Sarah Fisher Center
- The Utley Cemetery
- McCabe Funeral Home
- Samuel Davis House
- Lawrence Simmons House
- The Pettibone House
- The Harger House
- West Farmington Cemetery
- Charles Wixom House
- Sleepy Hollow
- Nardin Park United Methodist Church
- Freedom Acres
- Aldrich House
- Pasadena Park
- Where Farmington Began
- The Philbrick Tavern
- Universalist Church
- The Longacre House
- The Walker/Wixom Tavern
- Stephen Yerkes Rodgers House
- The Botsford Inn
- Shiawassee Indian Trail
- Quaker Burial Ground
- Oakwood Cemetery
- Governor Fred M. Warner
- City of Farmington Original Historic District
- First Quaker Meeting
- Farmington Masonic Temple and Township Hall
- Heaney - Sundquist Funeral Home
- Farmington's First Post Office
- The Village Center
- The Potawatomi Indians of Farmington
- Farmington's Disastrous Fire
- Detroit United Railway



SOURCE: City of Farmington Hills GIS, 2006

